



**VOLKSWAGEN CRAFTER**

**MAN TGE**

**INSTALLATION GUIDE**

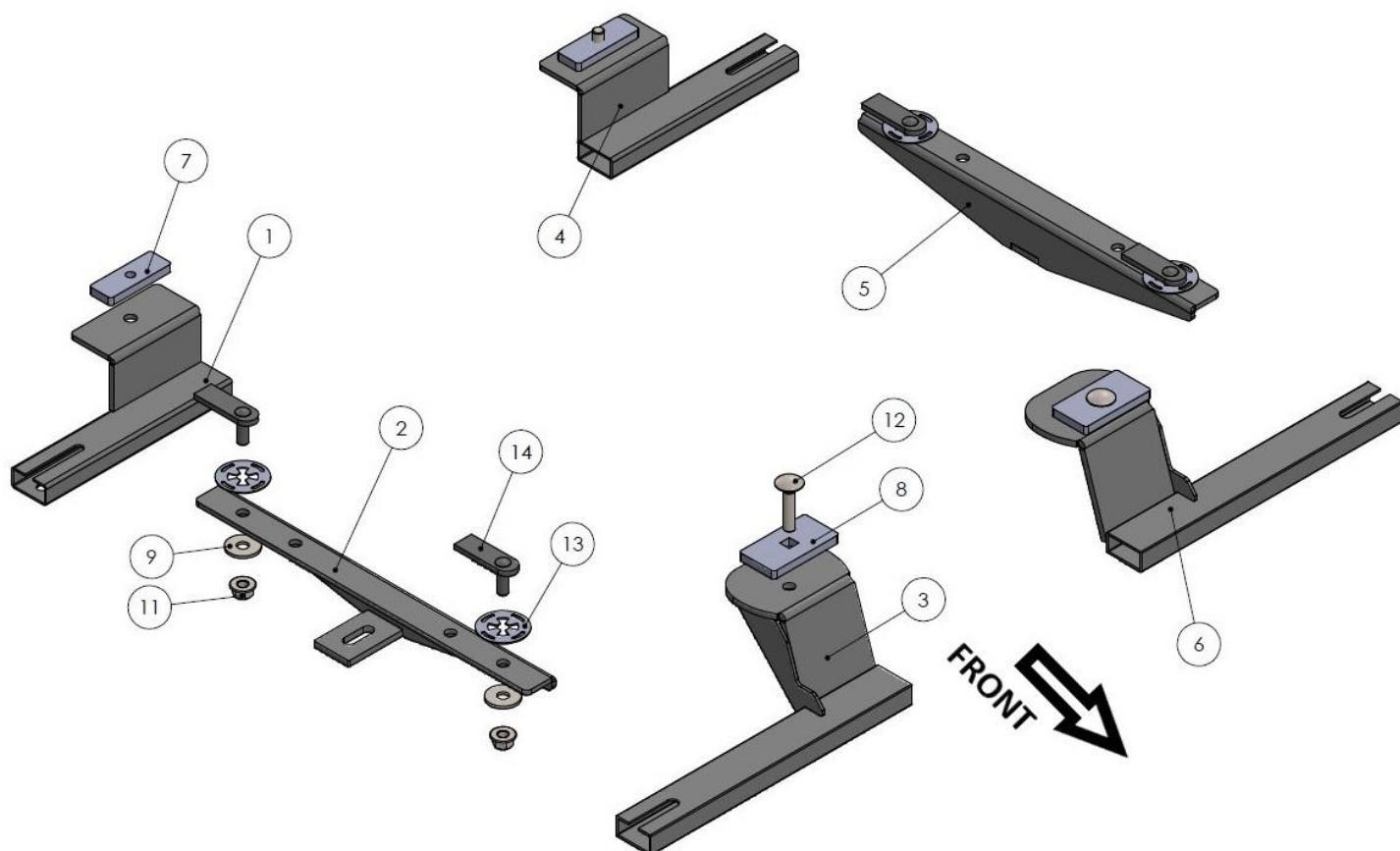


60 min.

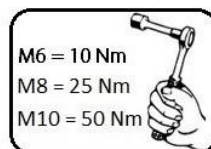
# Safety Instructions

- Carefully unpack the product and check whether the product is correct and complete. (Blows, scratches, dents, etc.)
- Two personnel should be present during the assembly process. Perform the assembly process with two people.
- Take all your safety precautions before starting the assembly.
- Take the vehicle to be assembled to the area to be mounted in a suitable and positioned position. (Lift etc.)
- While the vehicle is being taken off the lift, position it parallel to the lift and properly.
- Be sure to supply the tools required for the assembly process in advance.
- Check that all materials are complete and complete by referring to page 3 of the installation manual.
- When attaching the product to the apparatus, the forward, backward / right, left settings should be correct. Care should be taken not to collide with the mat or any other place on the vehicle.
- During the assembly of the product, carefully follow all the steps by carefully following the assembly guide that comes out of the box of the product.
- The product apparatus is designed to assemble to your vehicle without any welding. Do not weld in any way.
- Do not tighten the bolts before aligning the product to the apparatus and the vehicle.
- After making all your adjustments, tighten all the bolts.
- Do not throw away the boxes until the assembly process is completed.
- Finally, when the assembly is finished, make your checks and finish the process and throw the packaging away.

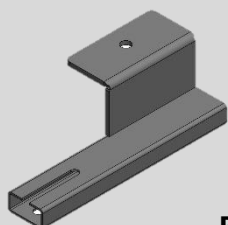
**Note: Our company is not responsible for the problems caused by not following the general safety instructions above.**



ITEM NO.	PART NUMBER	QTY.
1	Passenger Side Bracket-1	1
2	Passenger Side Bracket-2	1
3	Passenger Side Bracket-3	1
4	Driver Side Bracket-1	1
5	Driver Side Bracket-2	1
6	Driver Side Bracket-3	1
7	HTCOR3	2
8	HTCOR6	2
9	M10 - Washer	8
10	M10 x 25 - Hex Flange Bolt	2
11	M10 - Hex Flange Nut	6
12	M10 x 45 - Square Neck Bolt	2
13	HTC 269 - CLIPS (M10)	4
14	HTC 230 - M10x25(5x20x60)	4

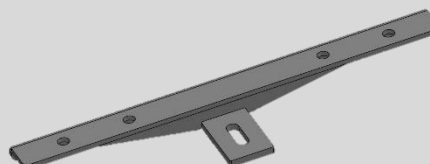


## Box Contents



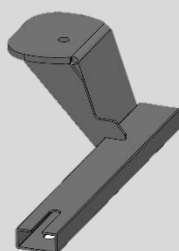
1

**PASSENGER SIDE BRACKET-1**  
x1



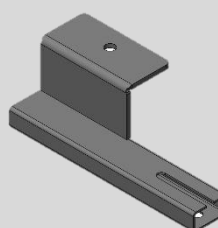
2

**PASSENGER SIDE BRACKET-2**  
x1



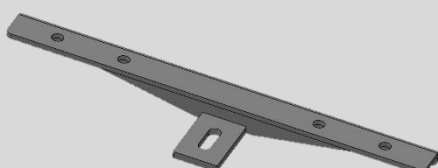
3

**PASSENGER SIDE BRACKET-3**  
x1



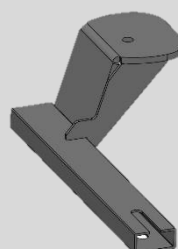
4

**DRIVER SIDE BRACKET-1**  
x1



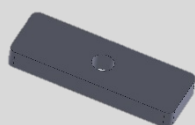
5

**DRIVER SIDE BRACKET-2**  
x1



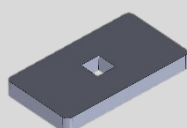
6

**DRIVER SIDE BRACKET-3**  
x1



7

**HTCOR3**  
X2



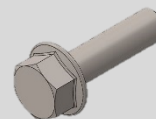
8

**HTCOR6**  
X2



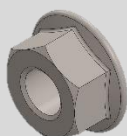
9

**M10 -Washer**  
X8



10

**M10x25 – Flange Bolt**  
X2



11

**M10 FLANGE NUT**  
X6



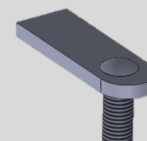
12

**M10x45 SQUARE  
NECK BOLT**  
X2



13

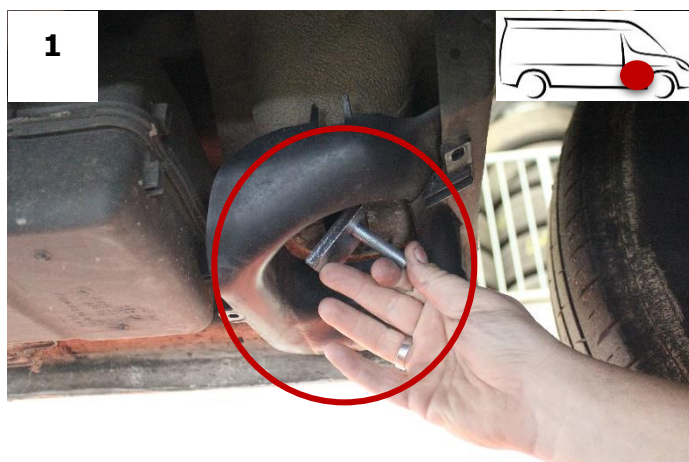
**HTC 269 M10 CLIPS**  
X4



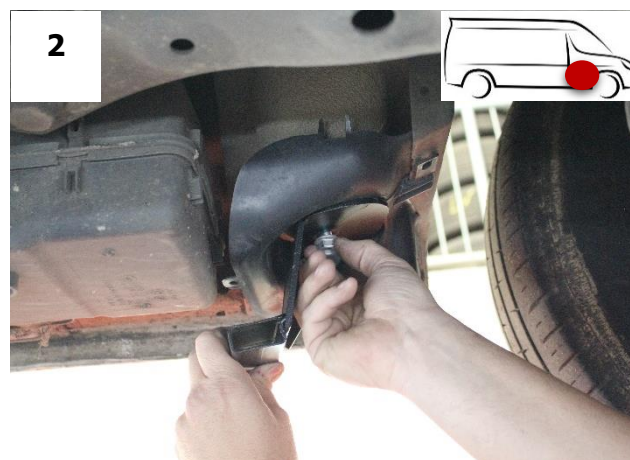
14

**HTC 230 M10x25**  
X4

## Brackets Assembly



To mount the passenger front bracket, insert the HTCOR6 + M10x45 square neck bolt into the area marked in the figure.



Fix the passenger front bracket to the vehicle with the help of M10 nut.



Remove the gaskets marked in the figure in order to mount the passenger center bracket.



Insert the HTC 230 bolt into the holes and secure it with the HTC 269 clip.



Fix the passenger center bracket to the vehicle with the help of M10 nut.



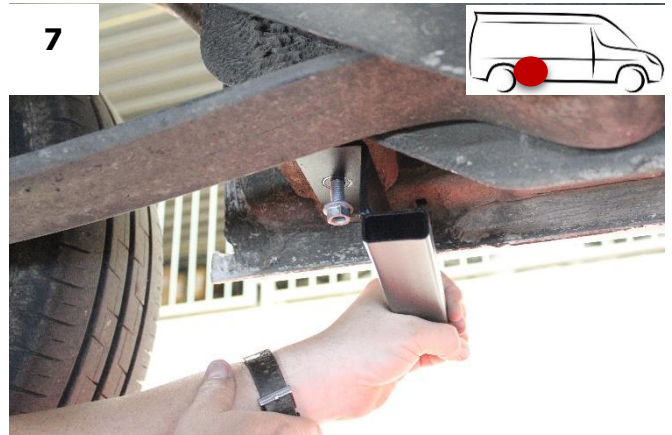
## Brackets Assembly

6



To mount the passenger front bracket, insert the HTCOR3 + M10x25 hex bolt into the area marked in the figure.

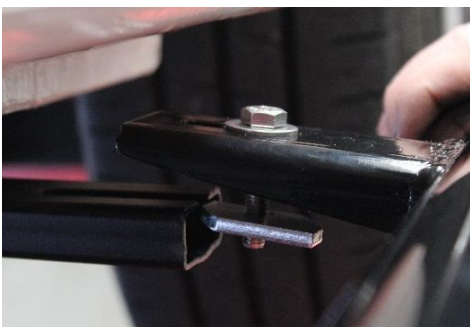
7



Fix the passenger front bracket to the vehicle with the help of M10 nut.

**REPEAT FOR OTHER SIDE**

## Side Steps Assembly



**Important!** After positioning the step in the appropriate position, tighten the M8 nuts with 25 Nm and the M10 nuts with 50 Nm.

