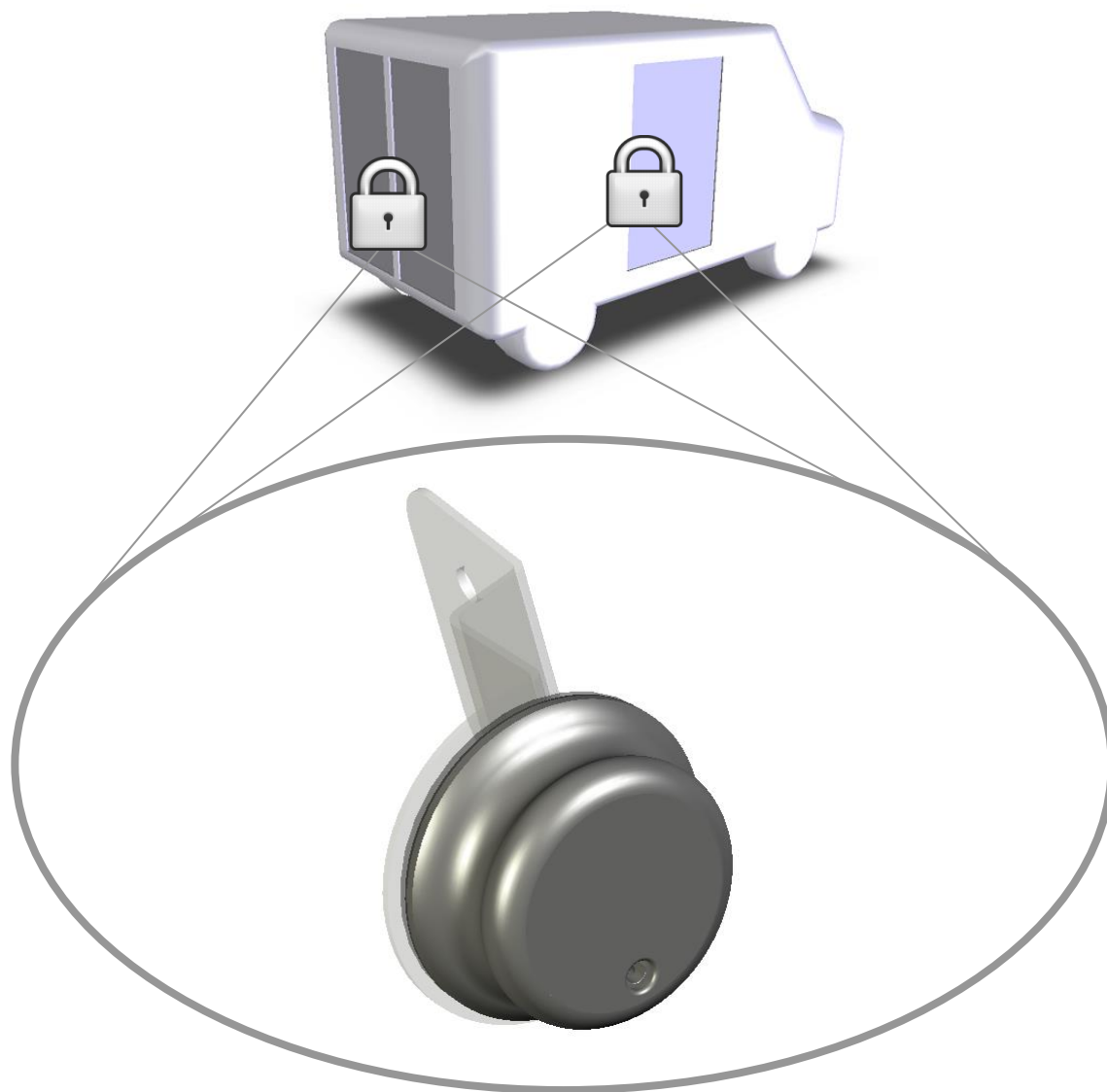


GATELOCK

NEW SERIES

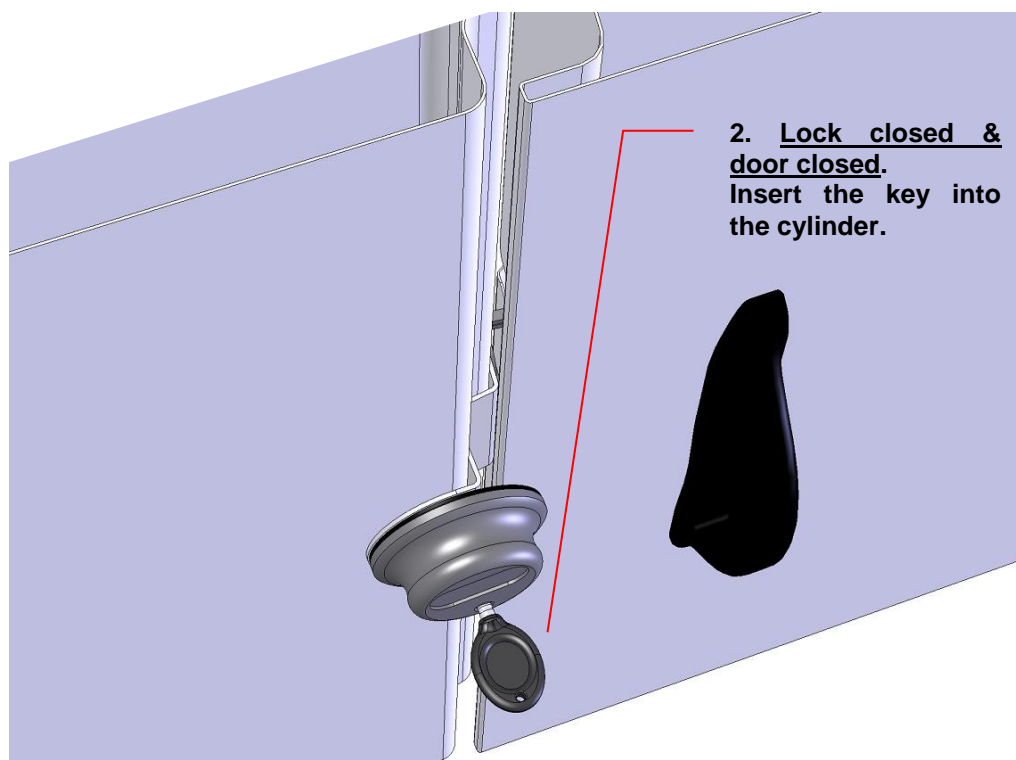
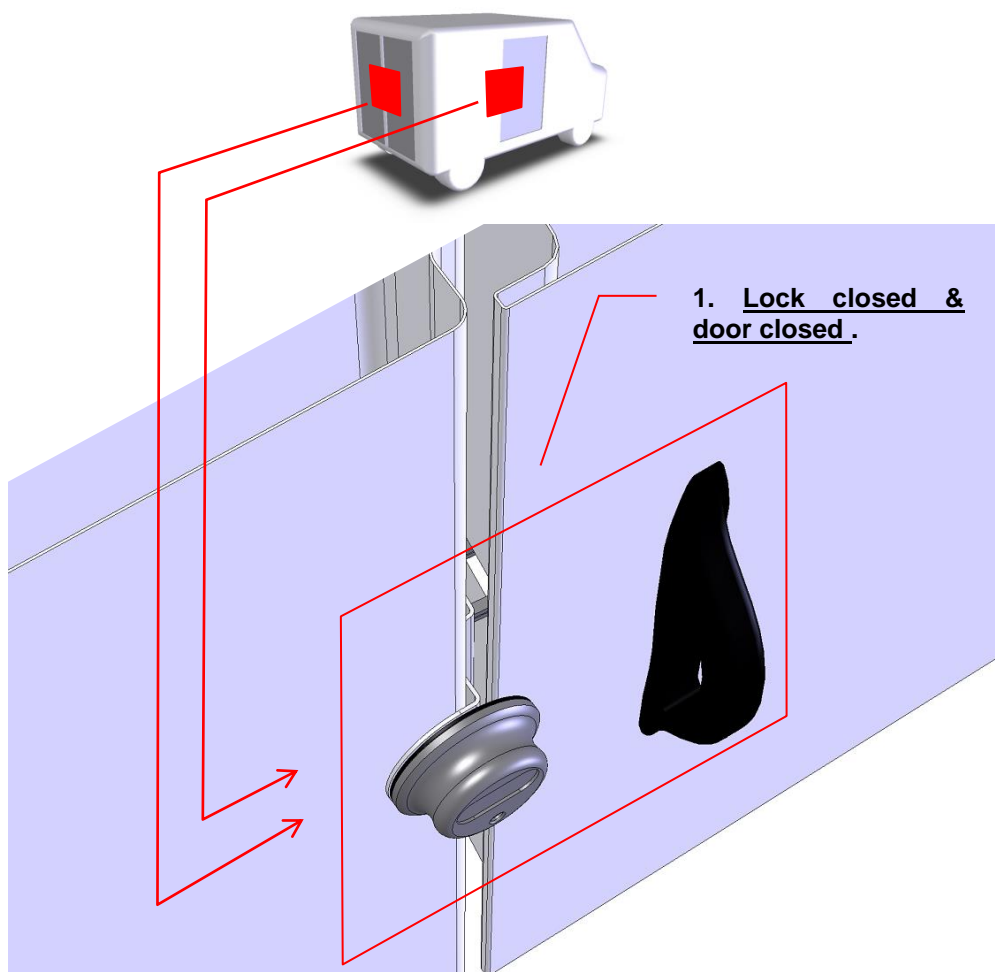
VAN

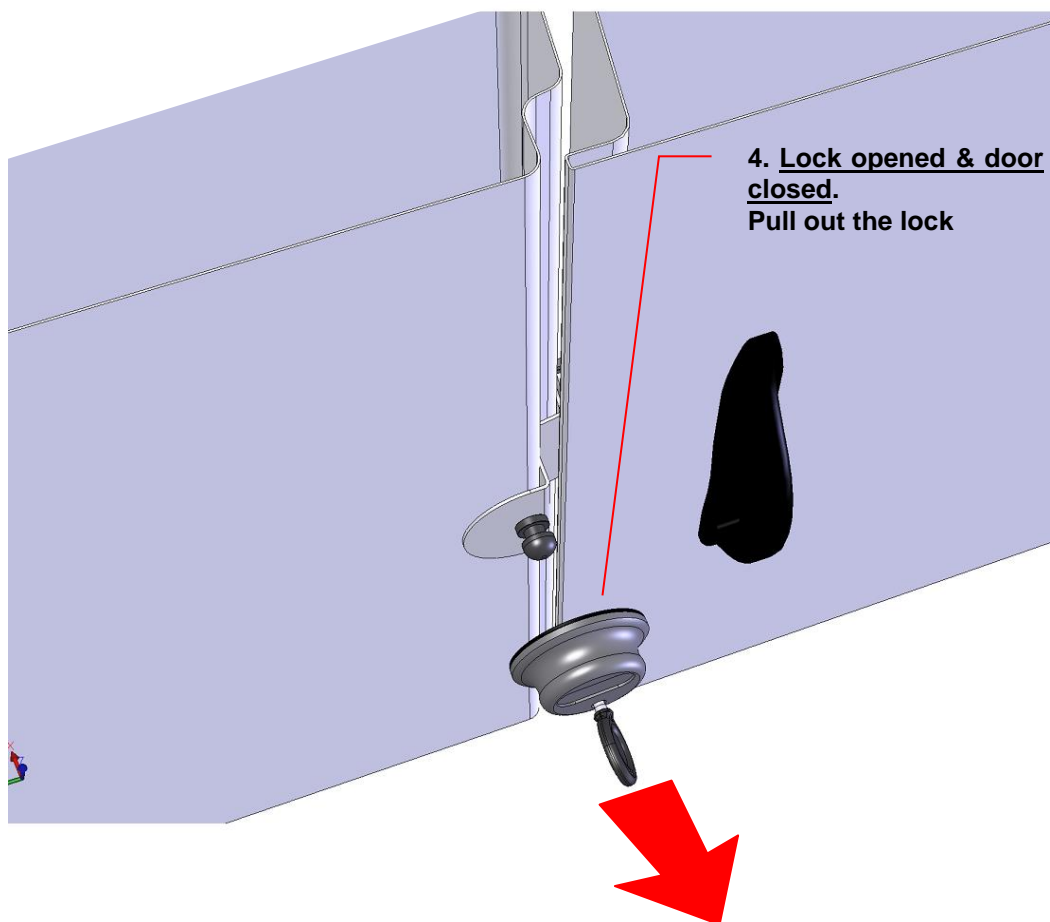
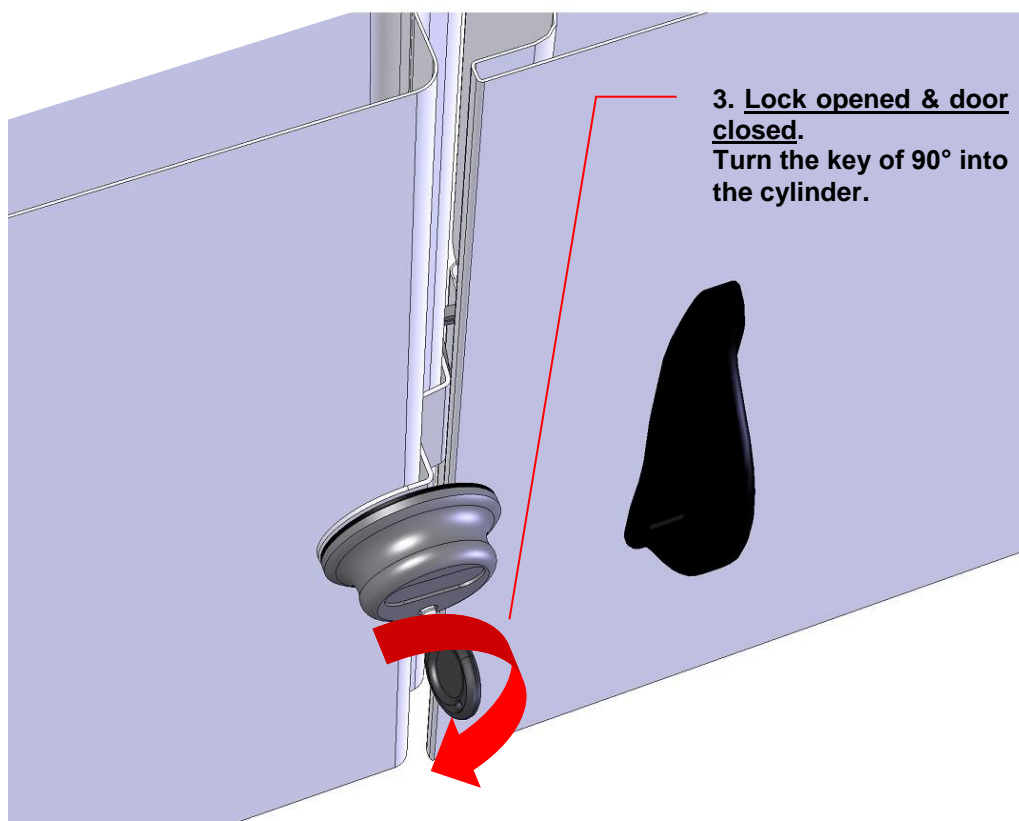


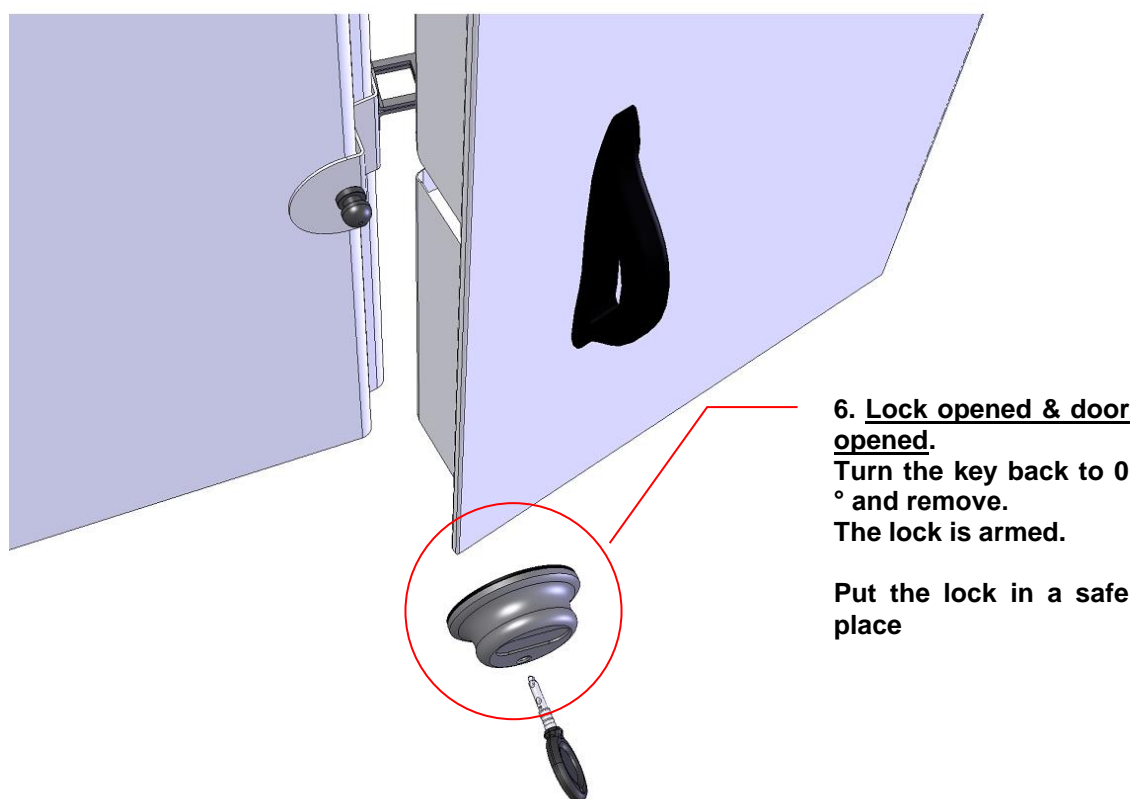
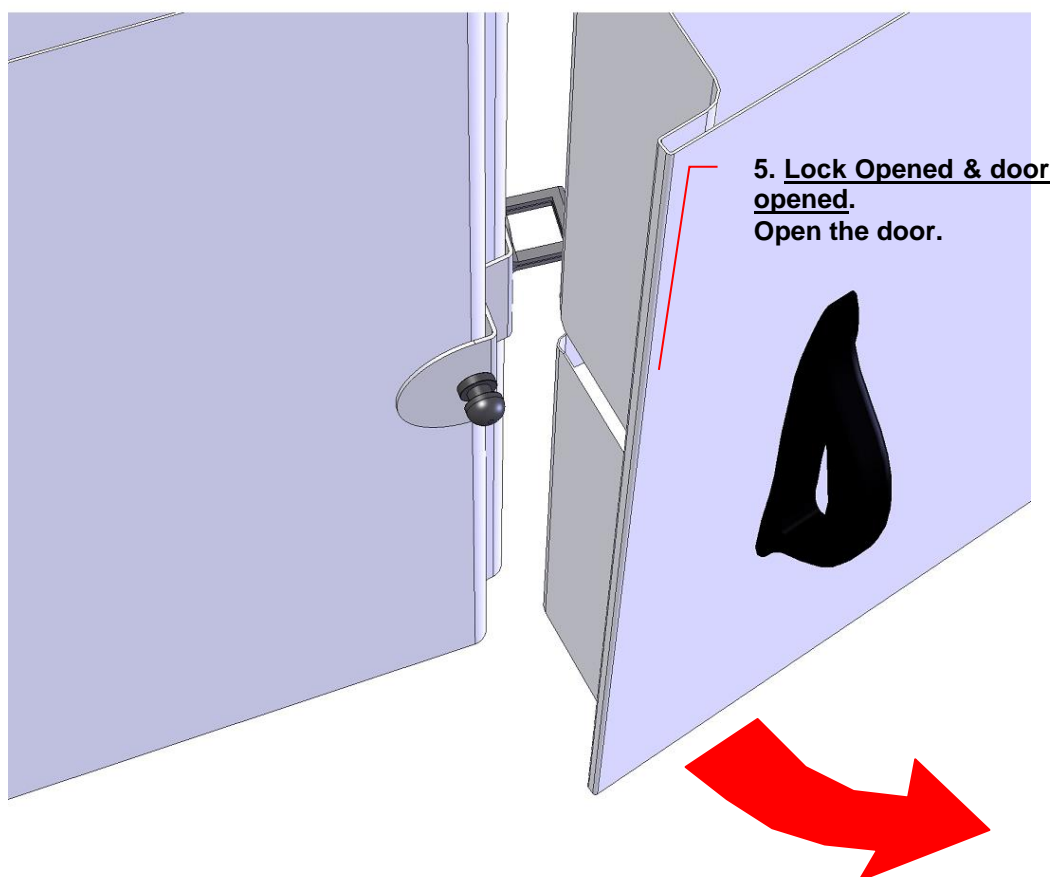
Serie 5

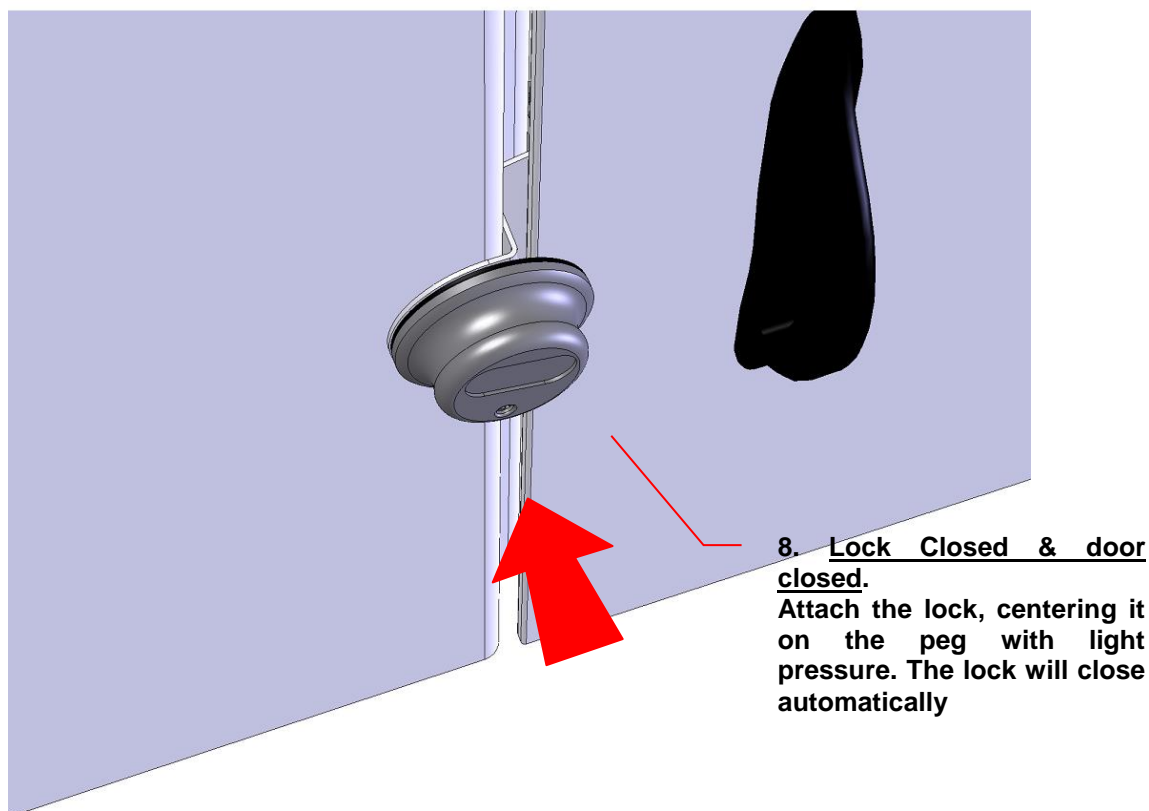
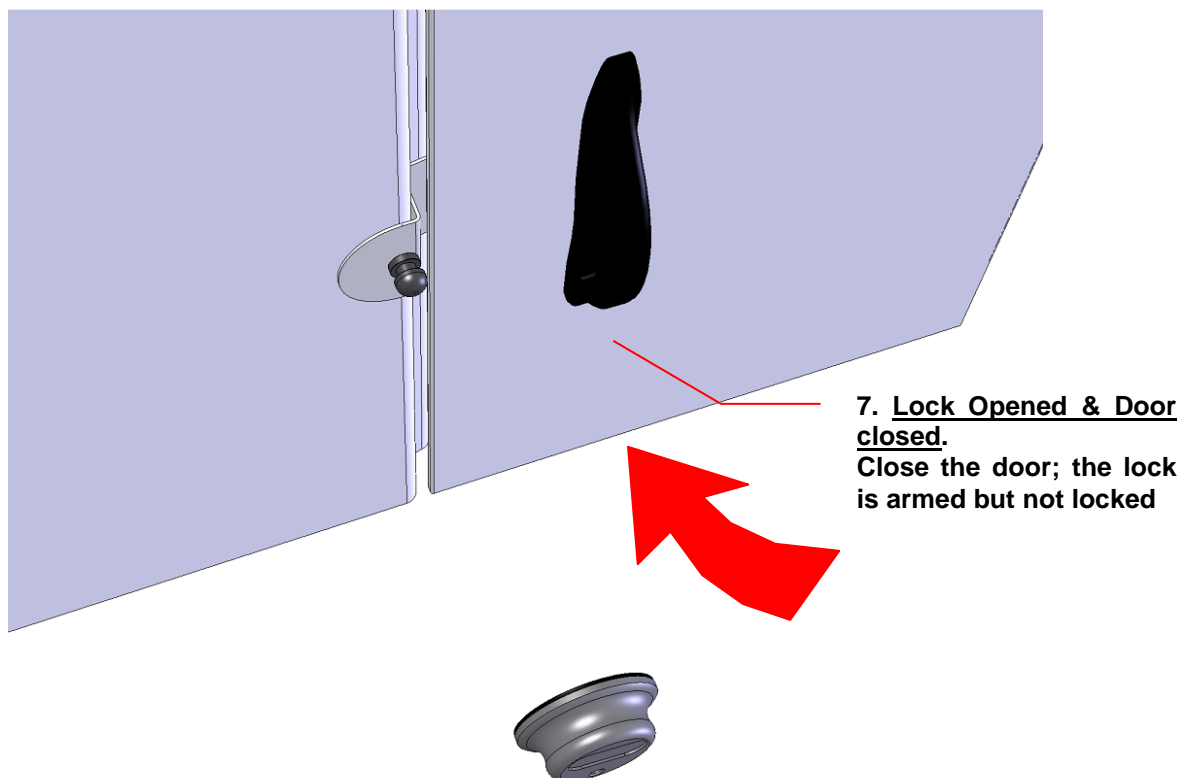
EXTERNAL LOCKING SOLUTION
For LIGHT COMMERCIAL VEHICLES

FUNCTIONING



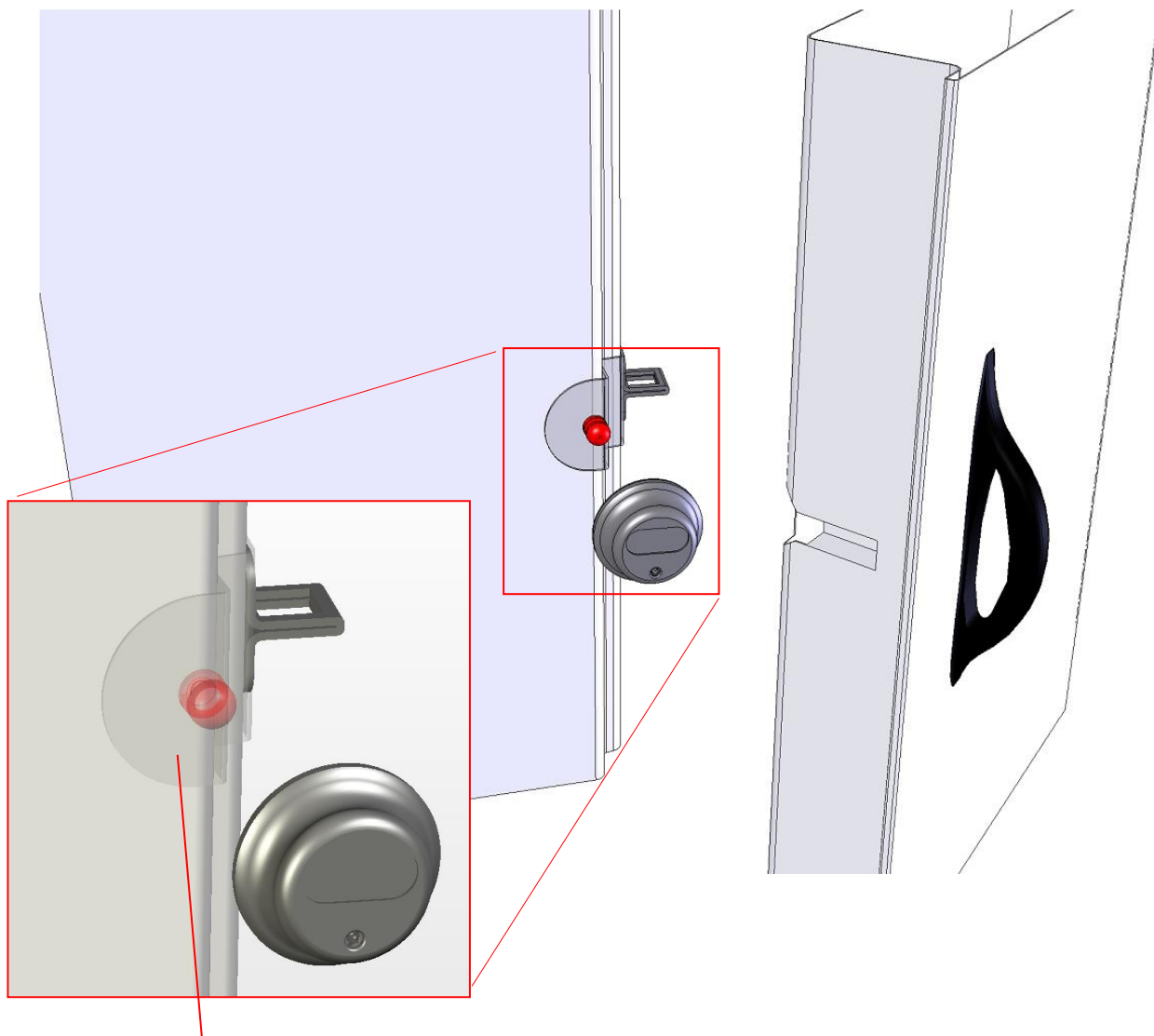






INSTALLATION

GATELOCKVAN 5 is an external locking solution for commercial vehicles. The device is applied either on the rear and side doors with NOT DRILLING the sheet metal. It can be applied in all doors.

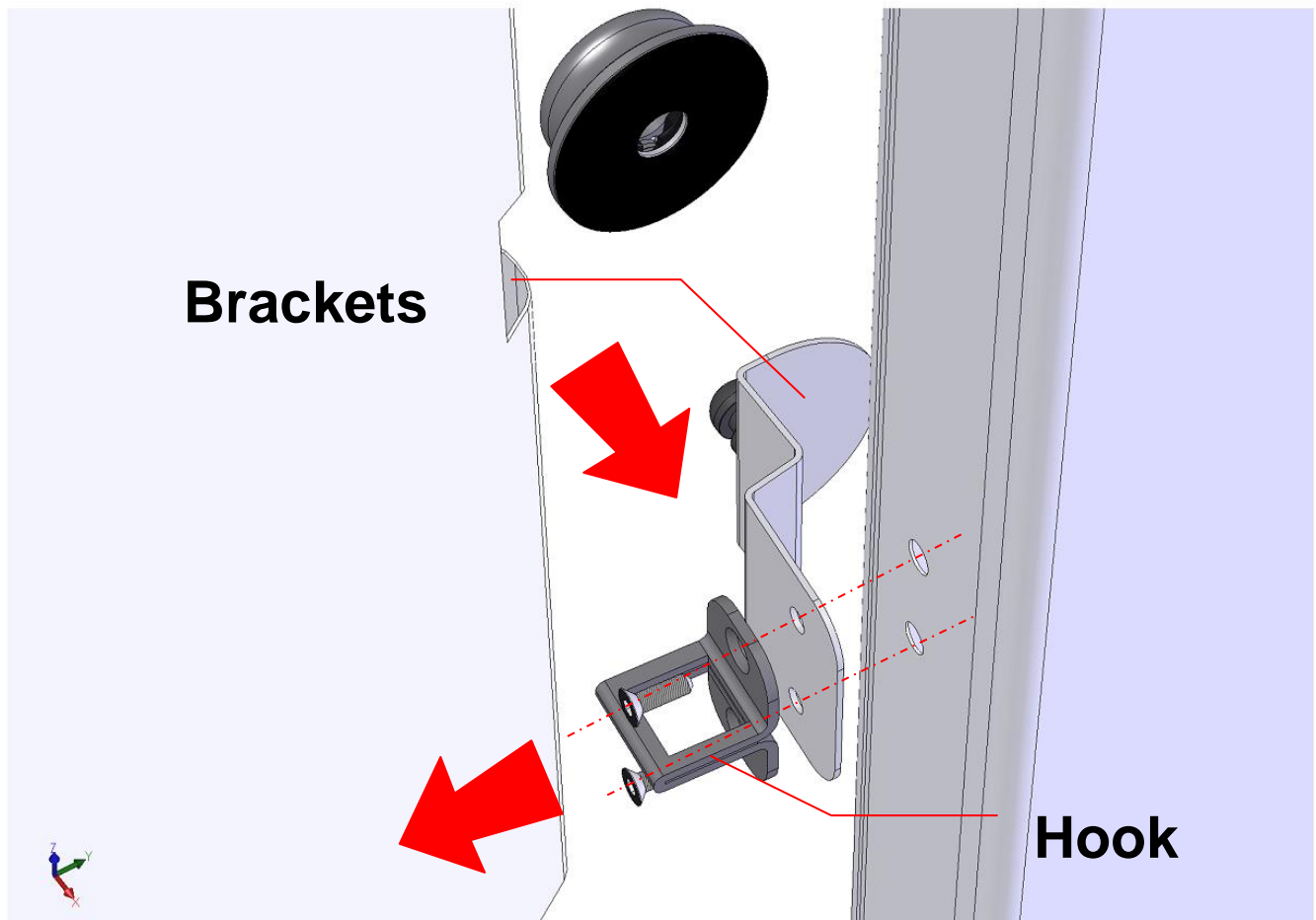


**NO HOLES
NO DRILLING**

Use the specific shaped plate to fix the lock (which is different from vehicle to vehicle and differs between the rear and the side door). The shaped plate is 3mm thick applied by using the same place of the original lock, over the door sheet metal. This plate is in fact a copy of the profile of the door and therefore perfectly adheres.

In particular, simply unscrew the original hook, apply the plate centering the two holes over it with the hook base, then screw the hook over the special shaped plate.

Only on the rear doors will be necessary to trim/cut out the back part of the original protective black gasquet for the portion which interferes with the shaped plate.



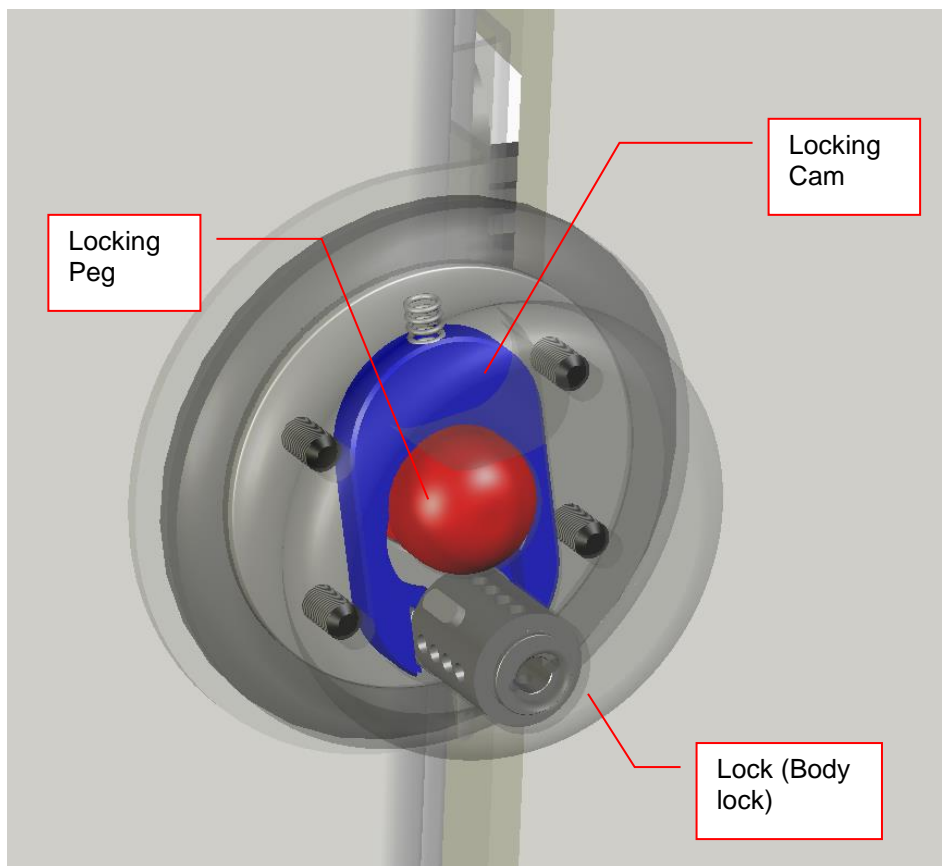
The type of fixation indicated previously, allows the application of the reversible lock. It will be possible to remove the plaque dedicated and tailgate will present the same characteristics as the original, avoiding costly steps to restore the vehicle body.

At the same time, the lock could be transferred to other vehicles of the same type.

TECHNICAL FEATURES

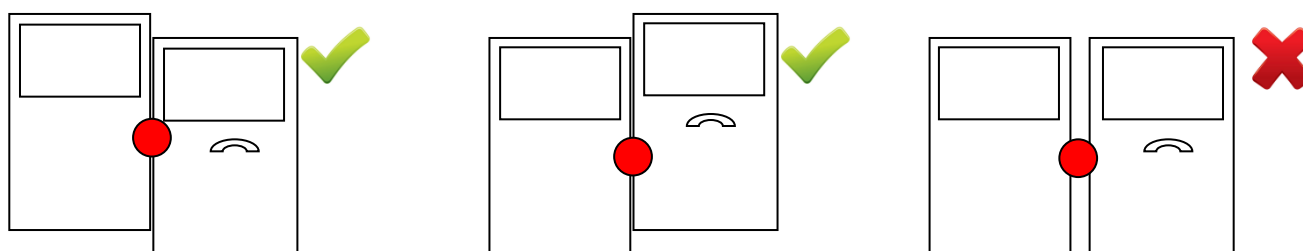
Cam locking System

The lock uses a particular cam as a locking member with a elliptical shape that engages the peg of the shaped plate fixed to the door. This has several advantages



First, when the lock closes, the coupling between lock-peg makes a single body able to resist more effectively different attacks from burglary tools (hammer, chisel, crowbar, pliers, screwdrivers...). In particular, the peg disappears inside the body lock making both a single part.

Second, this type of coupling between locking member and hook guarantees an effective play of the doors (most of the time not perfectly aligned). It is possible, this way, ensure the correct functioning of the lock even on used vehicles or not perfectly aligned). **CAUTION:** Avoid excessive misalignment of the doors horizontally, since they may reduce the sealing surface of the lock and so its strength against burglary tools.



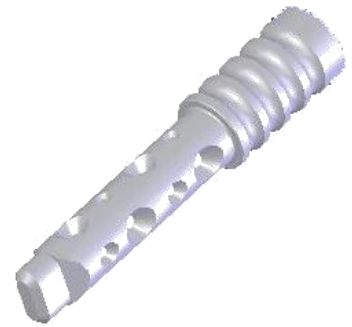
High Security Lock – NETOMA®

NETOMA® is the cylinder used on Gatelock Van (serie 6°). This high security cylinder was born to combine the opposite stems of security properties, dimensions and easy of use.

The key insertion is really easy. It has a perfectly cylindrical profile (side picture) not characterized by a preferred direction of insertion.

The cylinder is patented and duplication of keys are not possible except under specific authorization.

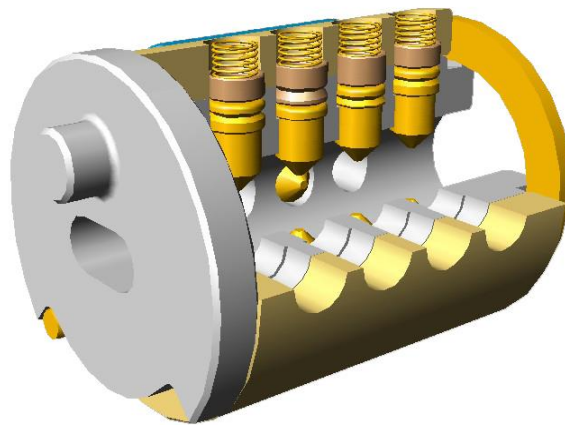
In reference to the clasification according to European Standard EN 1303, the cylinder NETOMA® falls under the category of cylinder lock with barrel (rotor) internal and external stator; the movable elements of retention between the two rotating elements are mounted on a cylindrical piston 4 file and operated by a key radial cylindrical profile with accommodation to imprint a truncated cone.



The cylinder is equipped with a high number of combinations: having in fact available to steps 16 and 4 different types of pistons, it is theoretically possible to reach a value of approximately 4 million combinations. This is obviously a limit value which must be subtracted from all those combinations related to technical constraints. Despite this, the number of encryptions actual remains remarkably high, exceeding 50,000.

The particular input profile of the barrel does not allow in any way the possibility of putting under tension the rotor, thereby preventing attempts to open with crowbar.

All moving parts are made of steel with very high strength and hardness, so as to effectively resist any attempts to

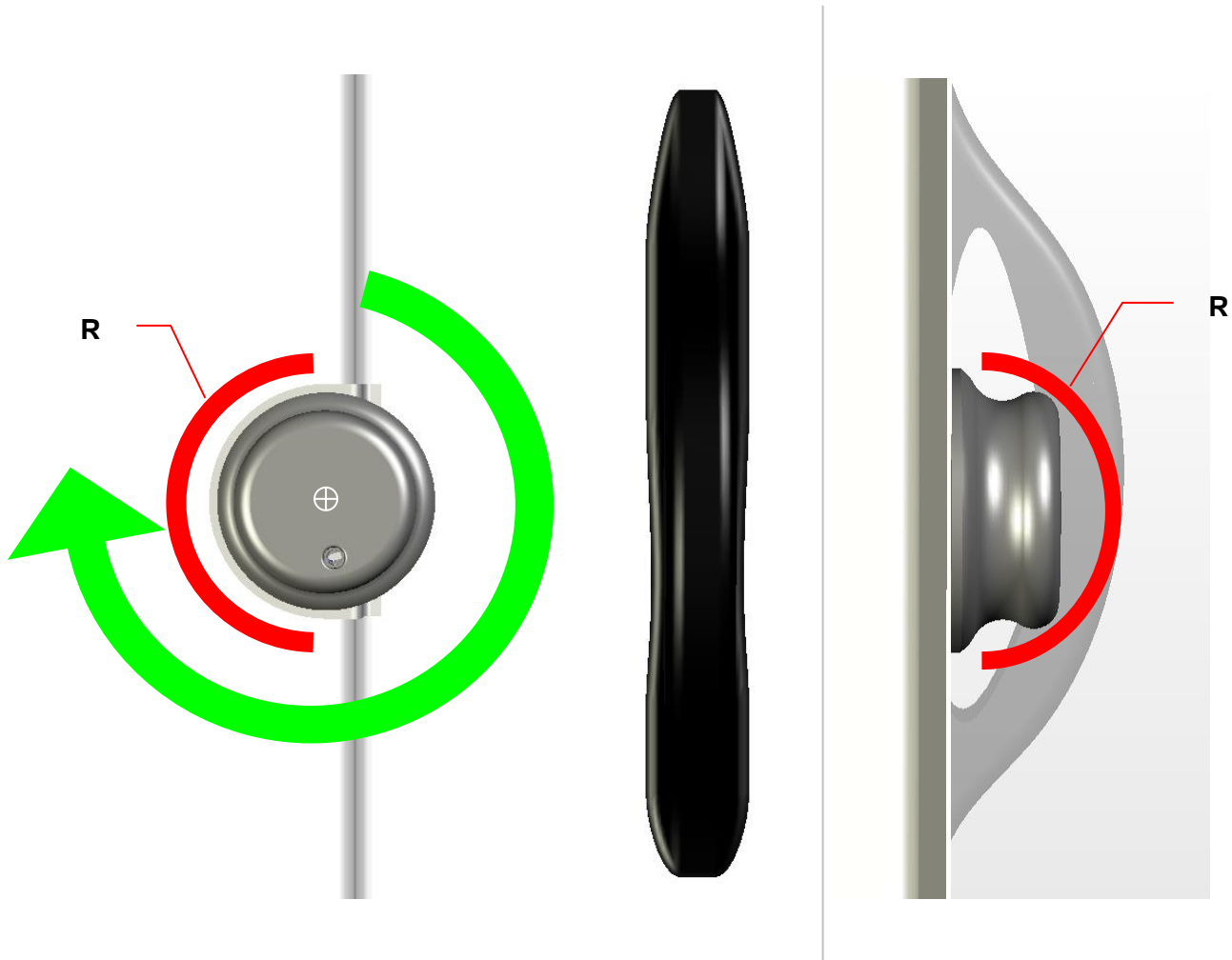


drill, chisel attack, twisting and removing the barrel.

The NETOMA Cylinder (series 4°) has been tested according to EN1303 from ISTITUTO GIORDANO, Technical organization at the forefront of product testing, certification, research, planning and training since 1959. The Institute has a section SECURITY, that takes care of checking the safety burglary. The section operates a system of quality management according to the UNI CEI EN ISO / IEC 17025 accredited and is also Sinal (accreditation no. 0021). The laboratory is also recognized as the reference laboratory by inspection or certification which RINA., Resister Lloyd, Bureau Veritas, ICIM, UNCSAAL, UNI, ECBS and from E.S.F.G

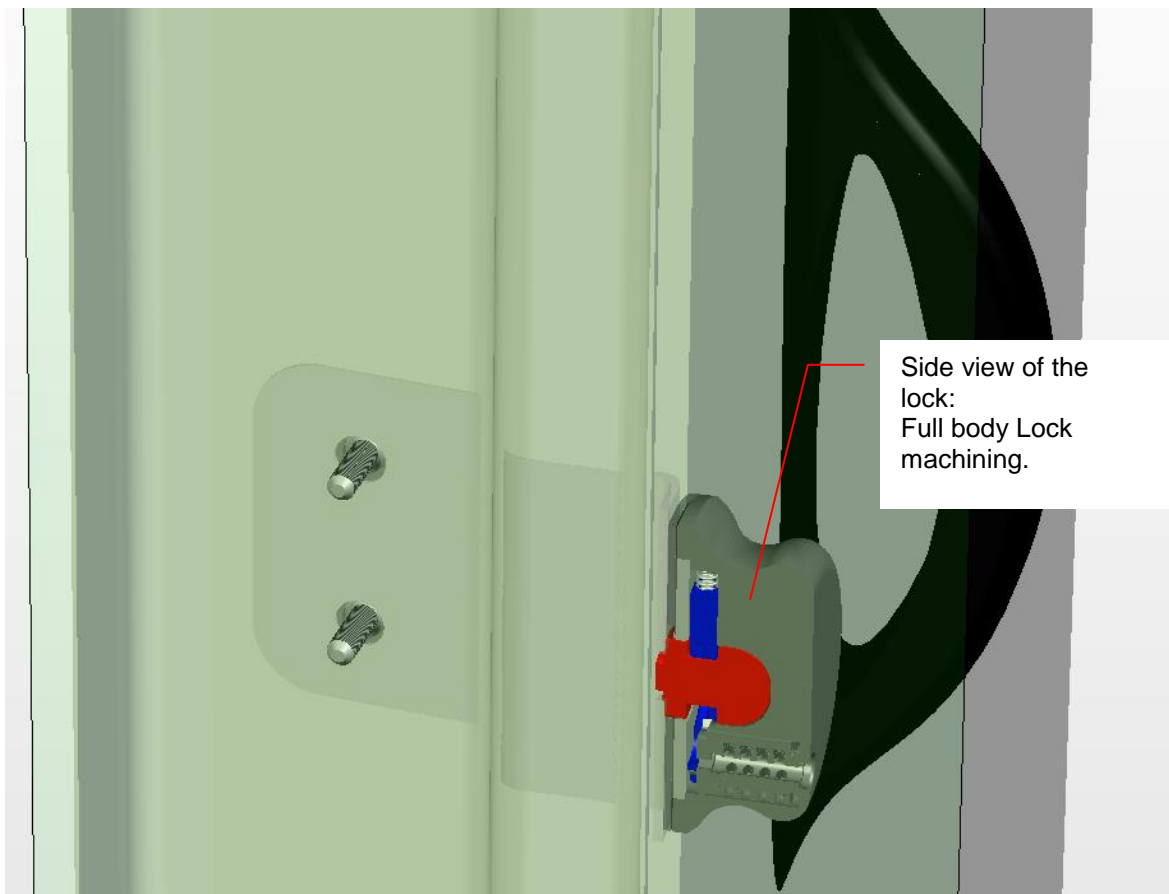
Geometries

The shape of the lock is fully rounded and united, and this prevents the most burglary tools (pliers, chisel, hammer,...) to grasp and pull off the lock.



Thanks to its functioning (centering coupling on peg) the lock, once closed, can rotate freely on its axis preventing graspable actions to pull it off.

Each internal component is unassailable. In fact, the cam and the peg are fully protected inside the body lock. The body lock is made of steel bar and machined with CNC machines.



The raw materials (Hardened steel for the body and stainless steel for the cam & peg), the surface treatment (carbo-nitriding) and the thick of the structure are the natural defense of the lock against drilling or cutting attempts.

The plate that holds the lock contributes greatly to its strength. It is made of stainless steel, has a high thickness (>2.5mm) and is perfectly adherent to the surface of the door (this also allows to prepare different folds that stiffen the structure).

In any case, to maximize the effectiveness of the padlock is always recommended that the standard lock of the vehicle is running and activated, in this way the seal is maximized thanks to the joint action of the two locking members (The original one and lock).

