

Mounting instructions

Side bar series: GM - GC- RM - RC - BM - BC

Mercedes Vito/V-Class 2003+ and 2014+



SW17 (46 Nm)

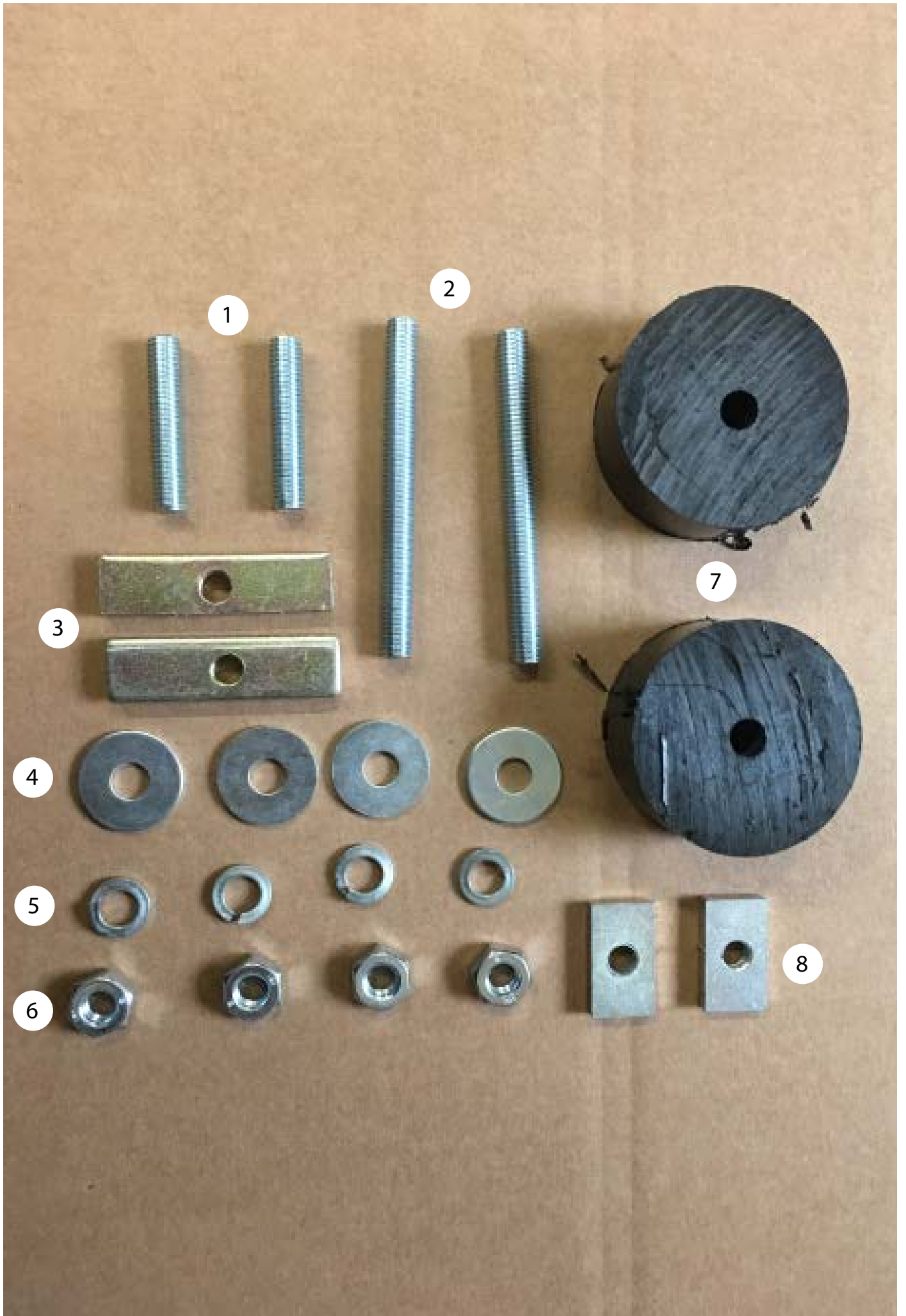


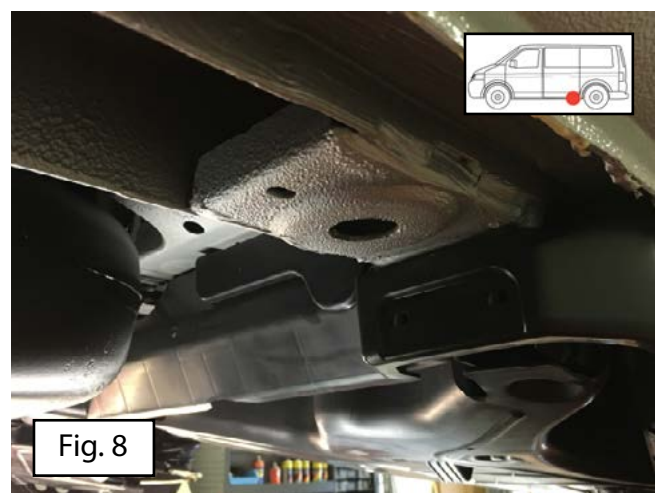
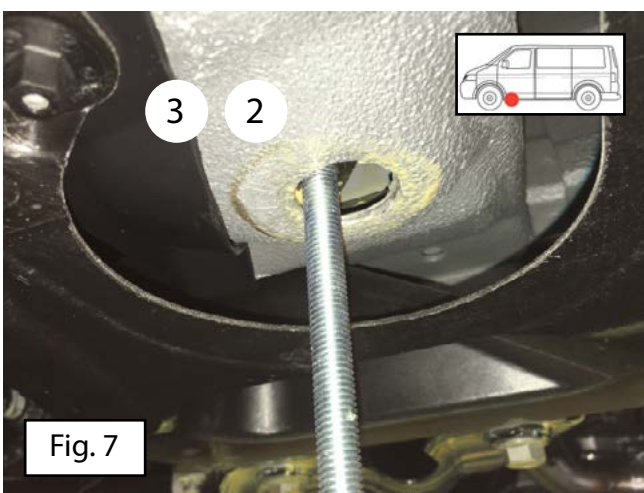
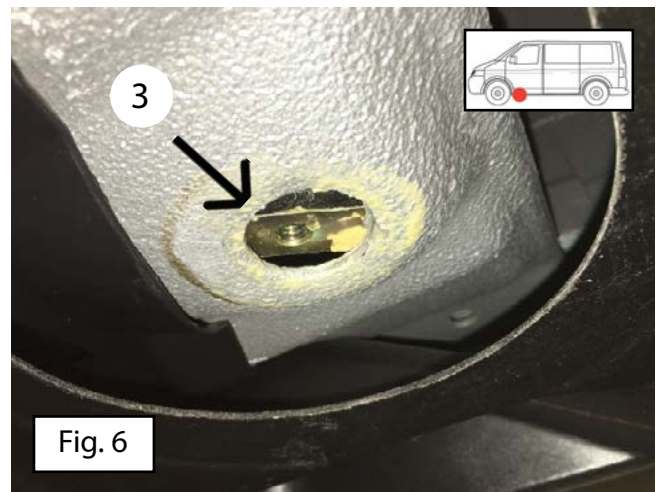
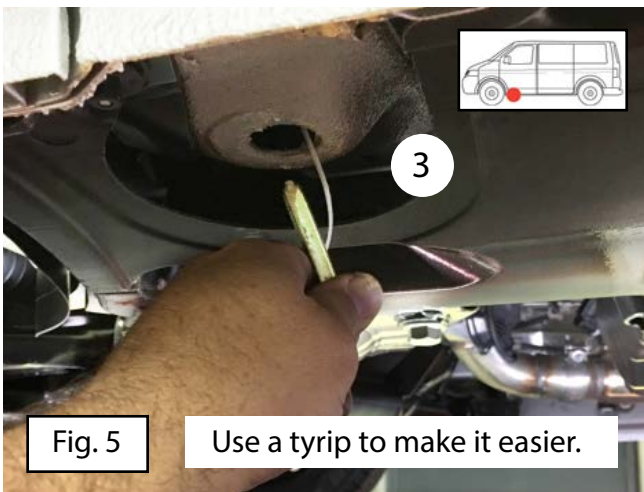
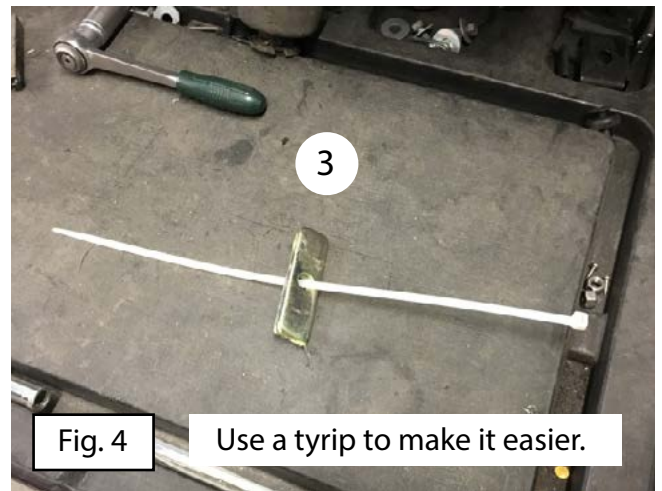
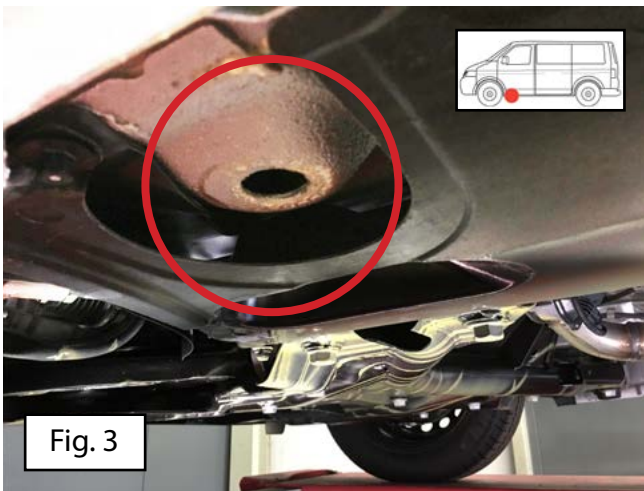
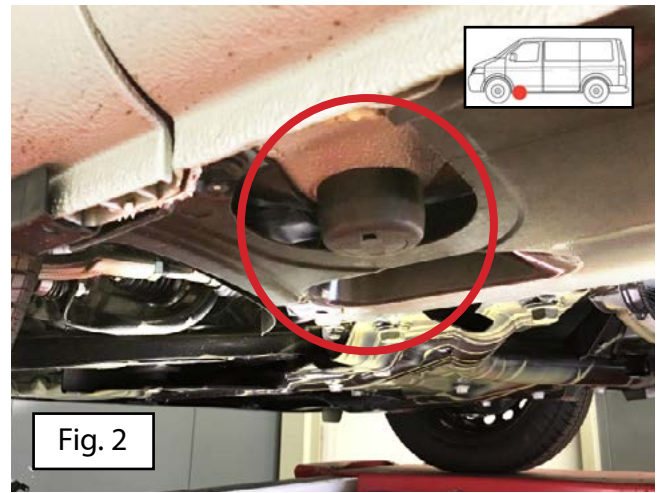
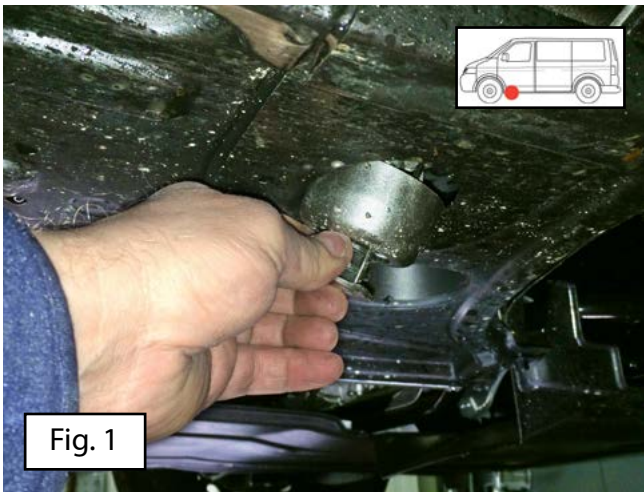
45 Min.

Version: January 2018









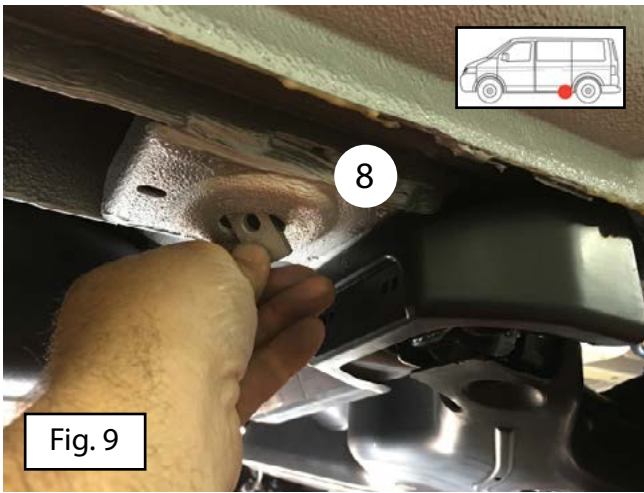


Fig. 9

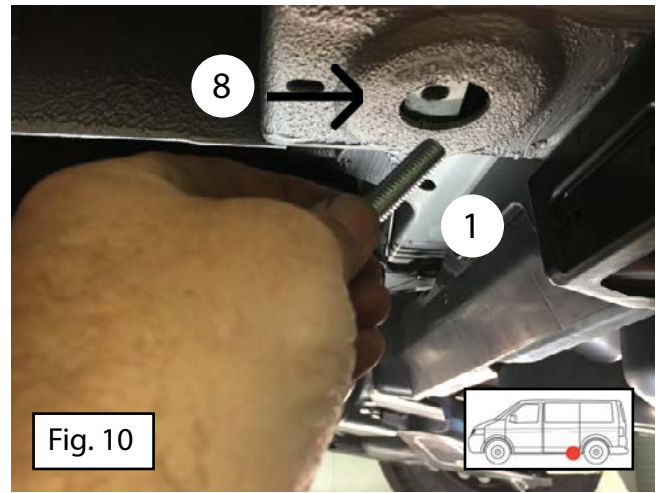


Fig. 10



Fig. 11

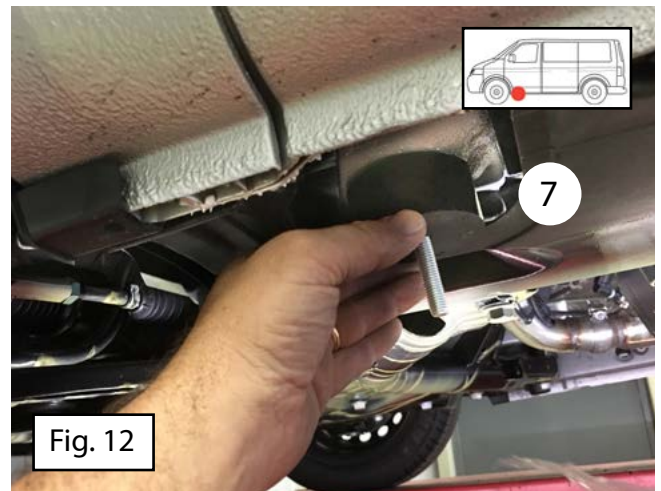


Fig. 12

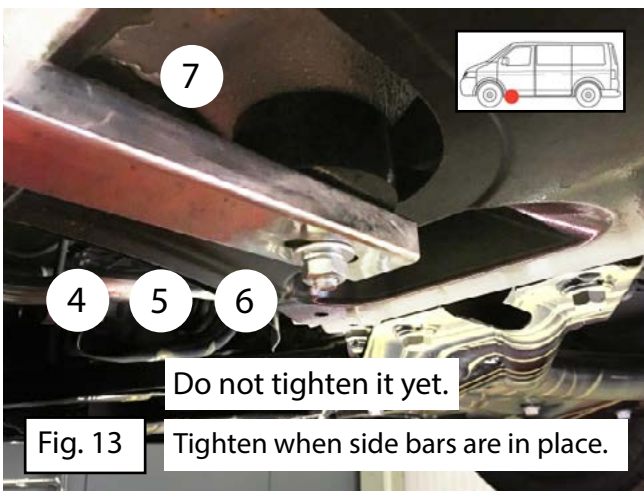


Fig. 13

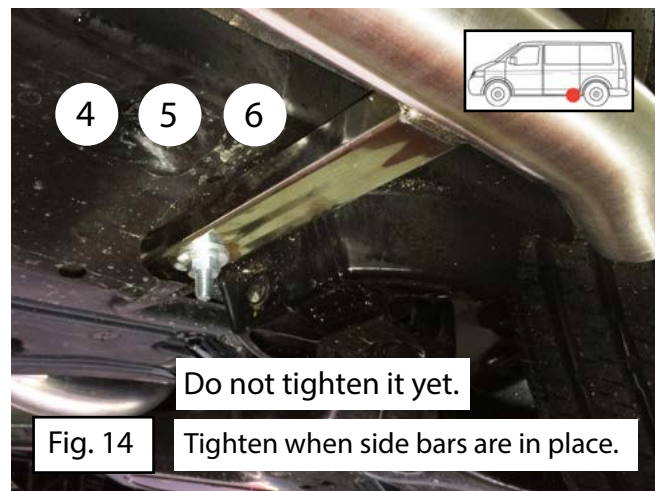


Fig. 14

Repeat these steps for the right side.